

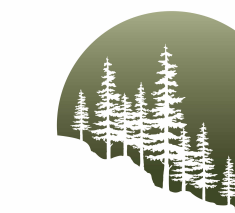
BUILDING G



Seymour Pacific
HOMES

100 St Arns Street, Campbell River, B.C.
(250) 286-8045 (F) 250-298-6046
www.seymourpacific.ca

CONTACT: DAVE GOENELL, GENERAL MANAGER
T: 250-360-3983 F: 250-297-9937
Dave.Goenell@seymourhomes.ca



Timber
RIDGE

SITE MAP:



PROJECT STATUS:

ISSUED FOR REVIEW

Revision Schedule

No.	Description	Revision Date
1	ISSUED FOR REVIEW	04/18/2024

TRADE CONTRACTORS SHALL VERIFY ALL DIMENSIONS AND REPORT ANY DISCREPANCIES OR INCONSISTENCIES TO SEYMOUR PACIFIC DEVELOPMENTS LTD. WITHOUT DELAY. FOR CLARIFICATION AND/OR CONFIRMATION, DO NOT SCALE DRAWINGS. DESIGNS REPRESENTED AND DRAWINGS USED AS INSTRUMENTS OF SERVICE SHALL REMAIN THE COPYRIGHT AND PROPERTY OF SEYMOUR PACIFIC DEVELOPMENTS LTD. ANY REPRODUCTION OR USE FOR ANY PURPOSE OTHER THAN THAT AUTHORIZED BY SEYMOUR PACIFIC DEVELOPMENTS LTD. IS PROHIBITED.

CONTRACTORS SHALL REMAIN FAMILIAR WITH, SHALL REFER TO, AND SHALL PERFORM IN ACCORDANCE WITH LOCAL LAWS, REGULATIONS AND BUILDING CODES. CONTRACTORS SHALL MAINTAIN GOOD INDUSTRY BUILDING AND SAFETY PRACTICES CONSISTENT WITH THE CONTRACT INTENT AND THE REQUIREMENTS OF JURISDICTIONAL AUTHORITIES.

ADDITIONAL CLAIMS AND COSTS RELATED TO NON-MATERIAL CHANGES WILL NOT BE ACCEPTED BY SEYMOUR PACIFIC DEVELOPMENTS LTD. NON-MATERIAL CHANGES ARE DEEMED TO BE PLAN CHANGES OR SPECIFICATION ADJUSTMENTS THAT DO NOT SUBSTANTIALLY AFFECT THE VALUE, TIME, COST AND QUALITY OF CONSTRUCTION.

CONTRACTORS SHALL MAKE EVERY REASONABLE EFFORT TO MAINTAIN SCHEDULE TARGETS AND PROVIDE GOOD EFFICIENCY, PROGRESS, WORKMANSHIP AND QUALITY TOWARD DEFICIENCY-FREE RESULTS.

PROJECT NAME:

**TIMBER RIDGE
TOWNHOMES
BUILDING G**

ADDRESS:

26/27/28/29/30-850
PARK FOREST DRIVE,
CAMPBELL RIVER, BC

DRAWING TITLE:

ELEVATIONS 2 OF 2

DRAWN BY: JW

CHECKED BY: TH

PROJECT NO.: VP 2117

SCALE: As indicated

DRAWING #:

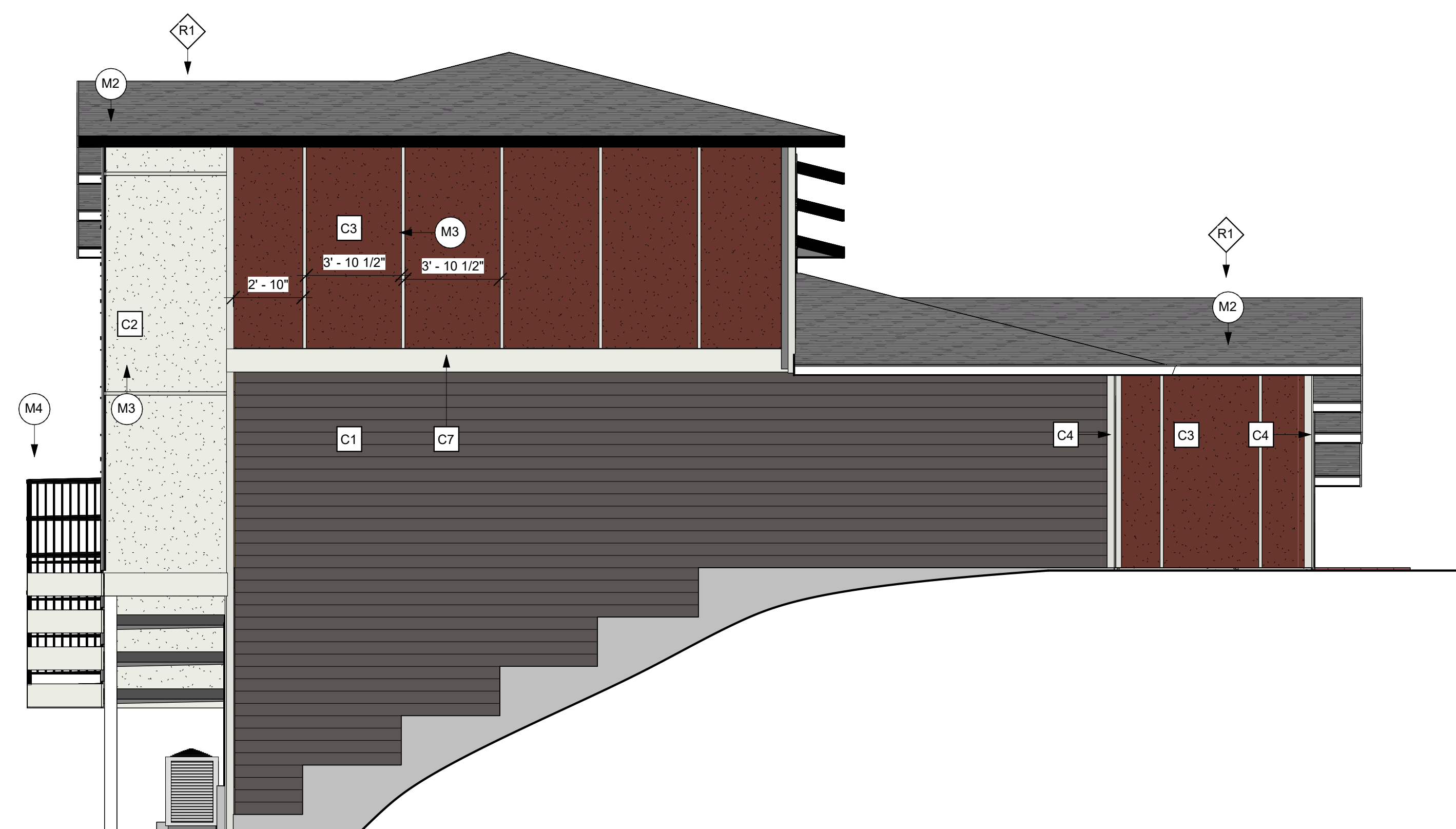
A3.01

REV #:

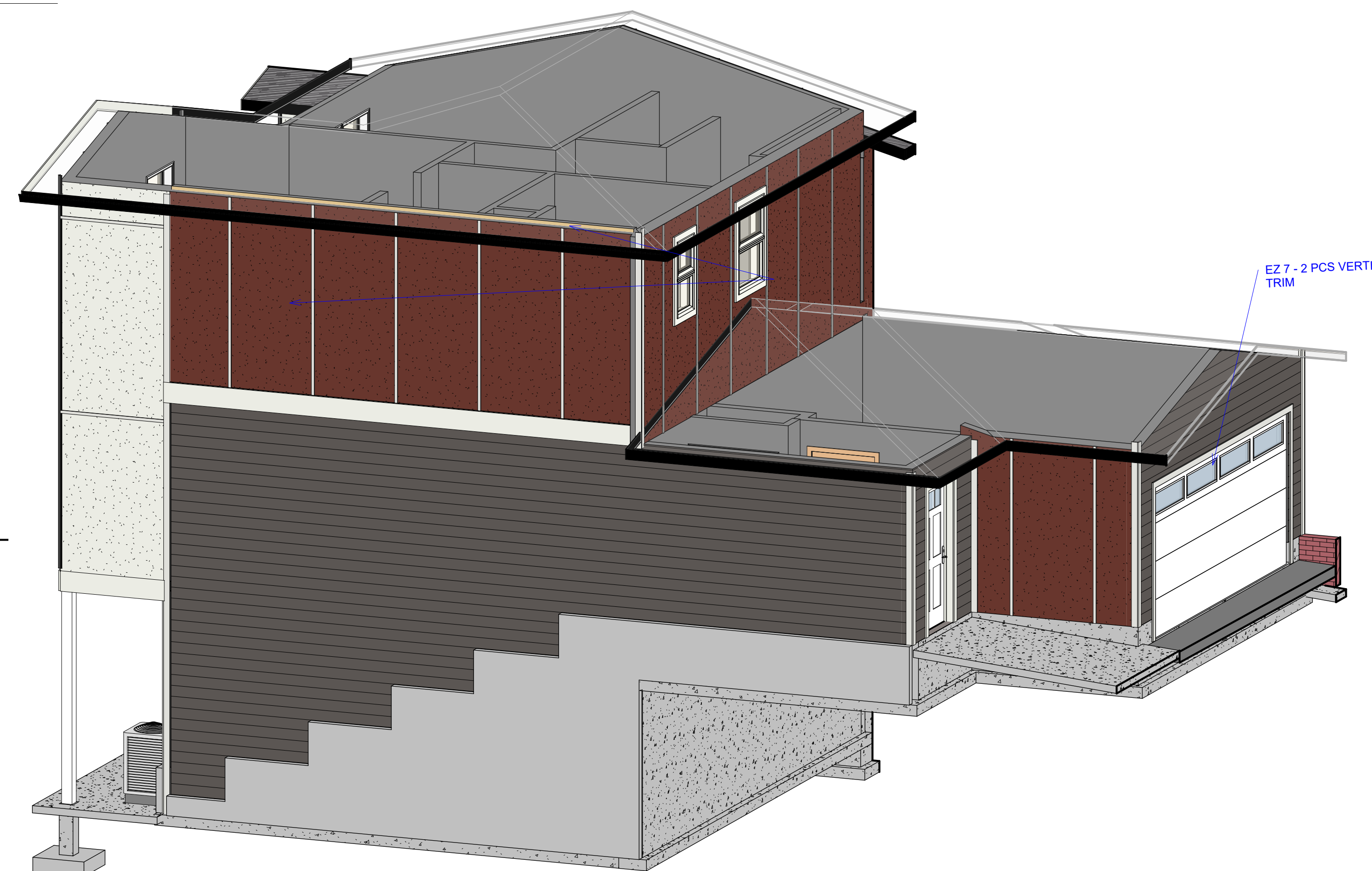
16



1 WEST ELEVATION
3/16" = 1'-0"



2 SOUTH ELEVATION
1/4" = 1'-0"



Cl	DESCRIPTION	COLOR	LOCATION
C1	PLANK - CEDARMIL	RICH ESPRESSO	LEVEL 1-2
C2	PANEL - SMOOTH	ARCTIC WHITE	BUMP OUTS
C3	PANEL - SMOOTH	COUNTRY LANE RED	UPPER STOREY
C4	4" CEMENT BOARD	ARCTIC WHITE	TRIM
C5	6" CEMENT BOARD	ARCTIC WHITE	TRIM
C6	12" CEMENT BOARD	ARCTIC WHITE	TRIM
C7	6" CEMENT BOARD	ARCTIC WHITE	FASCIA
C8	SOLID SAWN TIMBER	CLEAR COAT	SUPPORT POSTS

M#	DESCRIPTION	COLOR	LOCATION
M1	ALUMINUM DOWNSPOUTS	BLACK	VARIOUS
M2	ALUMINUM GUTTERS 5" K STYLE	BLACK	VARIOUS
M3	"E-Z" TRIM	BLACK	PANEL LOCATIONS
M4	ALUMINUM RAILING	BLACK	DECKS
M5	CLASSIC SOFFIT	WHITE	VARIOUS

R#	DESCRIPTION	COLOR
R1	ROOFING SHINGLES - 30 YEAR LAMINATE	SLATE BLACK
R2	ATTIC STATIC VENT	BLACK

